



JAKHALSDANS

GUEST FARM & SAFARIS



“KANNIEDOOD”

“MTB & HIKING TRAILS



ENJOY THE KAROO'S

BEAUTIFUL OPEN VISTAS, BREATHTAKING SUNSETS & UNIQUE FAUNA & FLORA

ROUTES	PIENK LAZY ROUTE	YELLOW SUN ROUTE	BLUE DAM ROUTE	GREEN LOOKOUT ROUTE	RED BRAVEHEART ROUTE
DISTANCE APPROXIMATE	10KM	16KM	20KM	28KM	40KM

ALL MOUNTAIN BIKERS ARE REQUIRED TO BUY A TRAIL PERMIT AT THE JAKHALSDANS RECEPTION BEFORE THEY DEPART / GUESTS FREE USE OF TRAILS

ADULTS R100

CHILDREN R20 (<12YRS)

RENTING OF GEAR R150

ANNUAL PERMITS ALSO AVAILABLE

**** ALL TRAIL FEES GO BACK INTO CONSERVATION, MAINTENANCE AND IMPROVEMENT ****



PLEASE APPLY SUNSCREEN

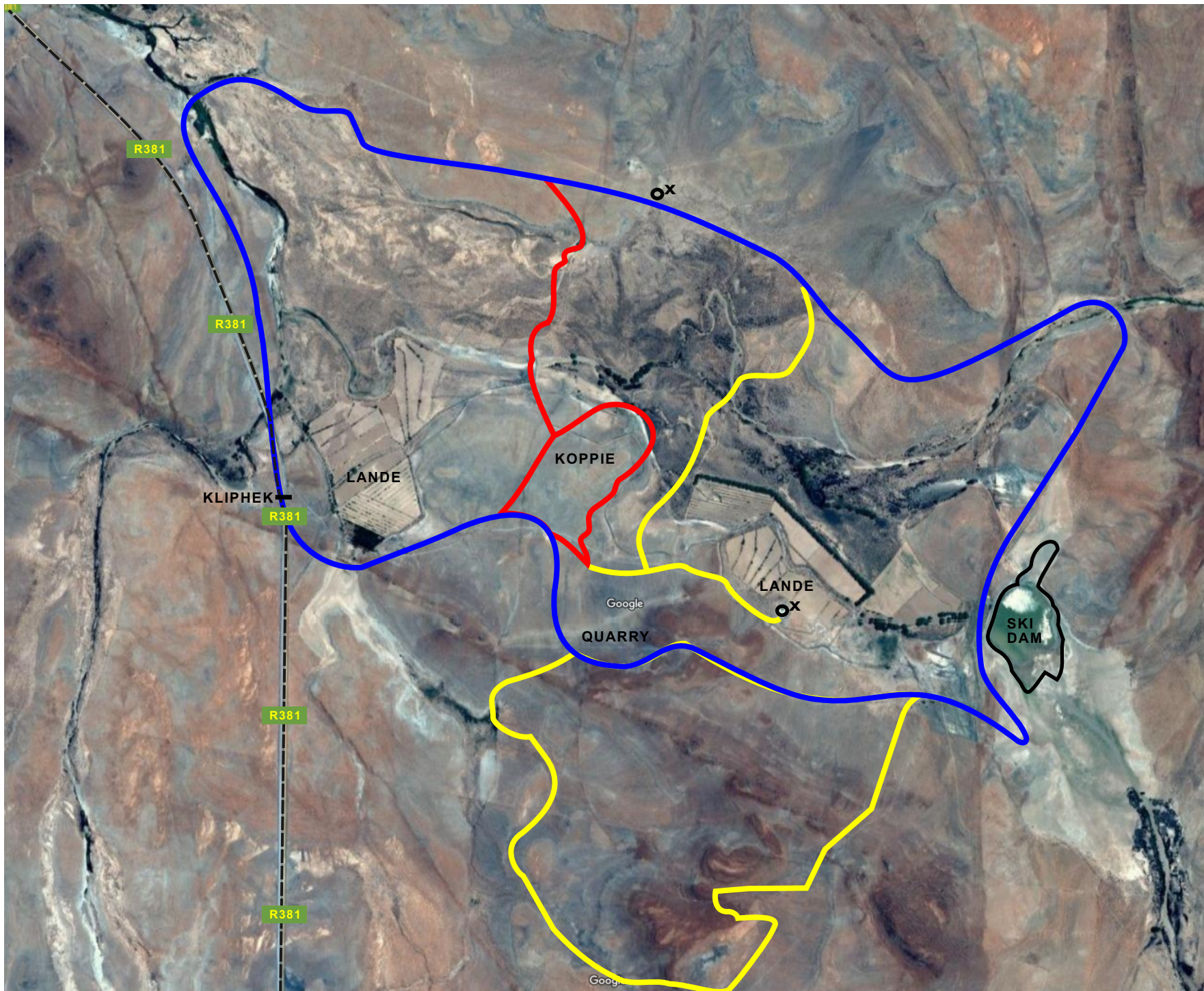


PLEASE TAKE ENOUGH WATER



TAKE NOTE NO TOILETS ON ROUTE





- X WINDPOMP
- O DAM
- ≡ GRID
- T HEK

